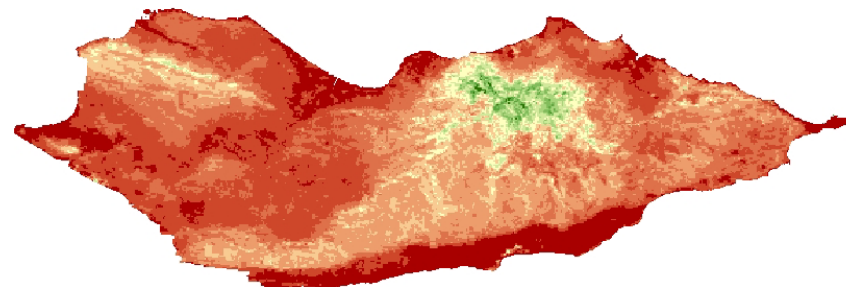
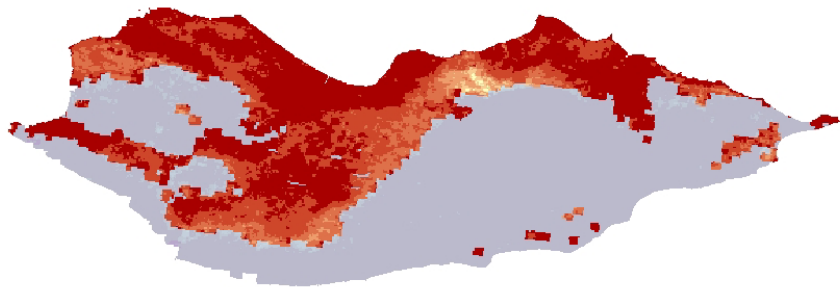


Využití IDRISI pro zpracování časových sérií obrazových dat satelitu MODIS

(studium fenologie vegetace v regionálním měřítku)

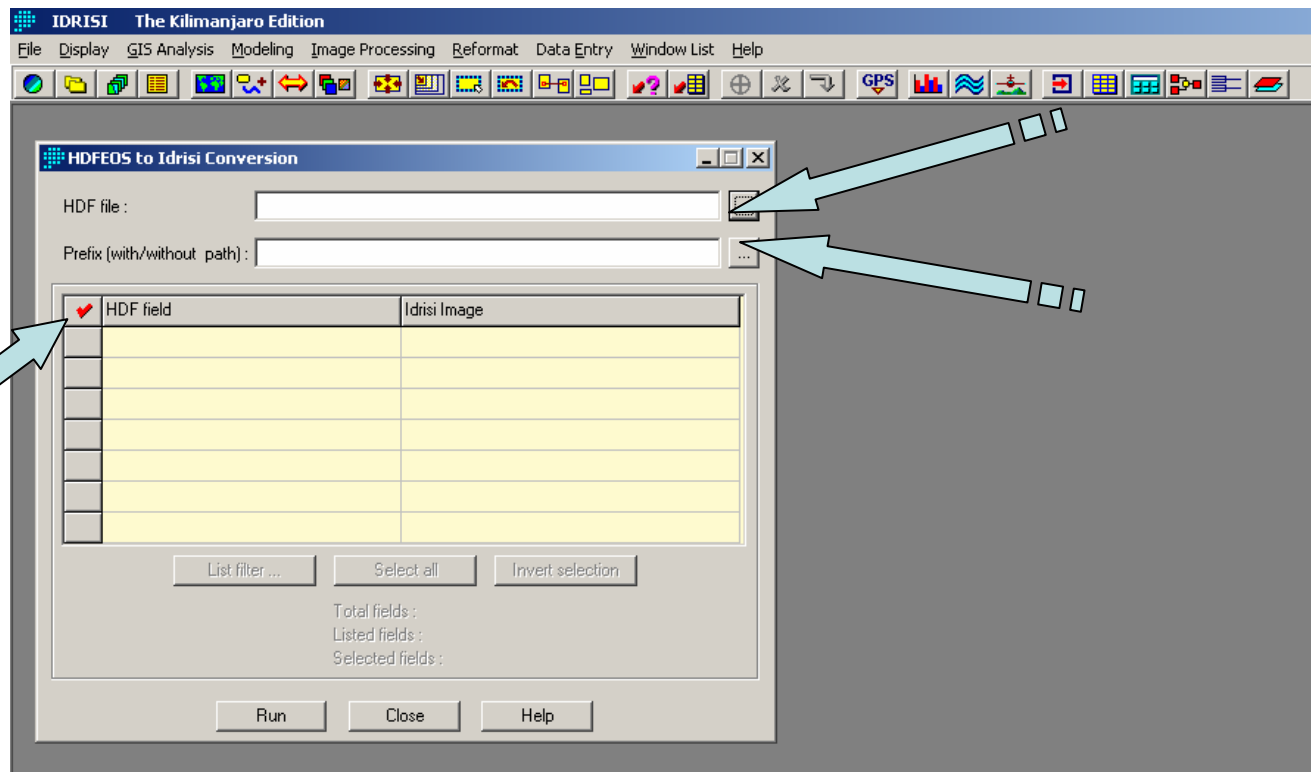
Kamil Král
AOPK ČR



MODIS VI products: NDVI, EVI (<http://edcdaac.usgs.gov/datapool/datatypes.asp>)

- 16-day composites (250m, 500m, 1km)
- monthly composites (1km)
- 8-day and daily Surface Reflectances (250m, 500m, 1km)
- 1200 x 1200km, HDF format

File / Import / Government-Data provider format / HDF:

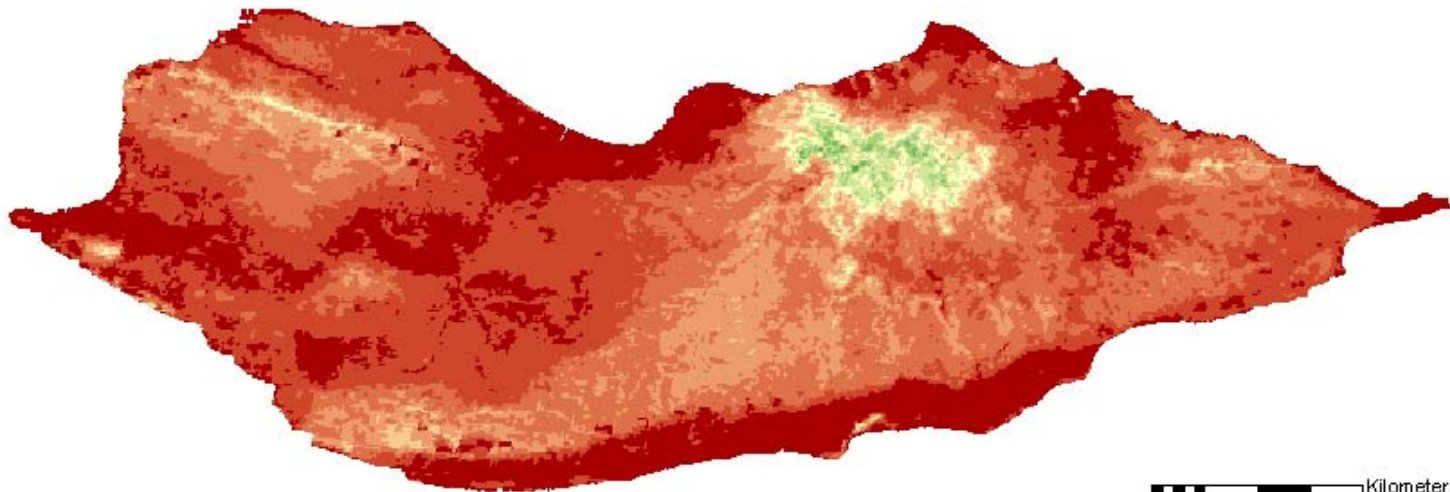


Zobrazení výsledné časové řady dat NDVI:

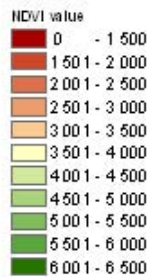


04_097: 13.4.2004

MODIS - NDVI 16 days composite from 6.4.2004 to 21.4.2004



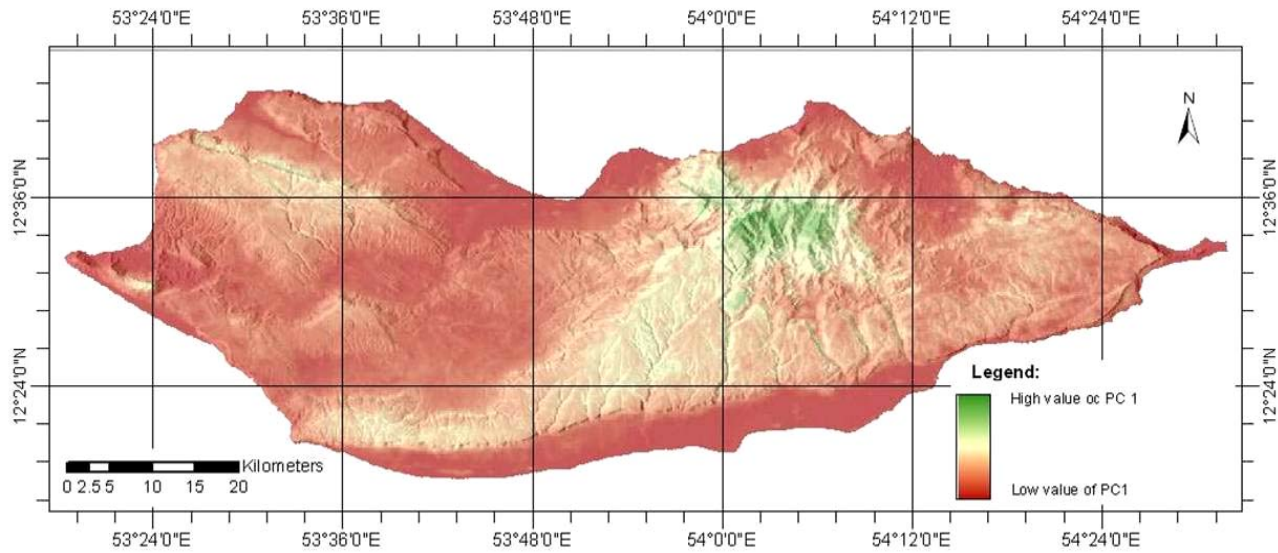
Legend:



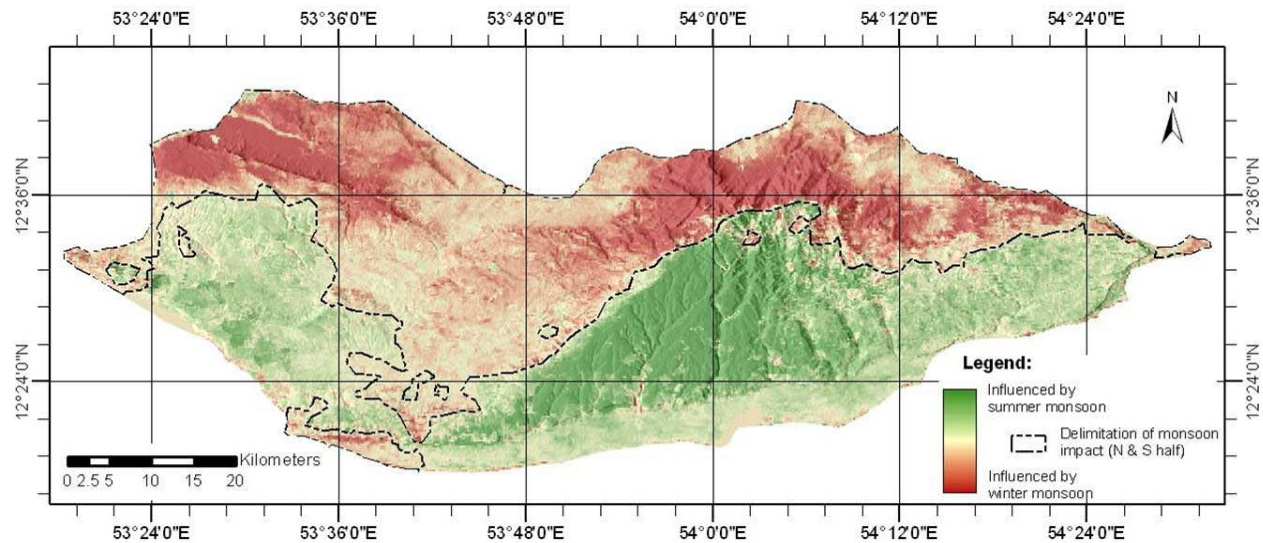
0 2.5 5 10 15 20 Kilometers

GIS Analyses / Time series / TSA:

PC 1:

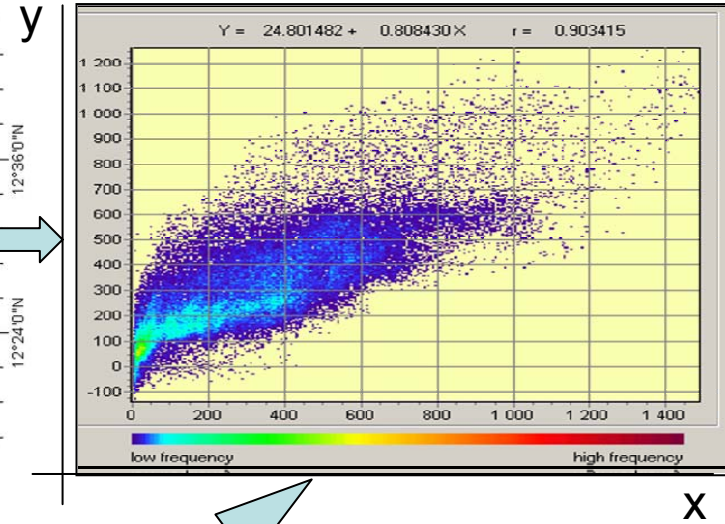
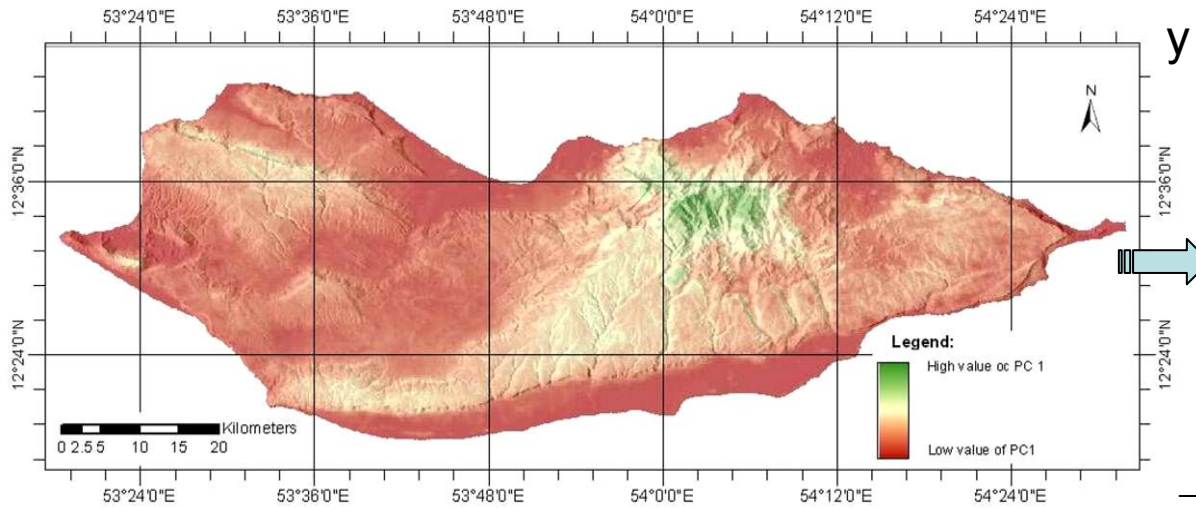


PC 2:

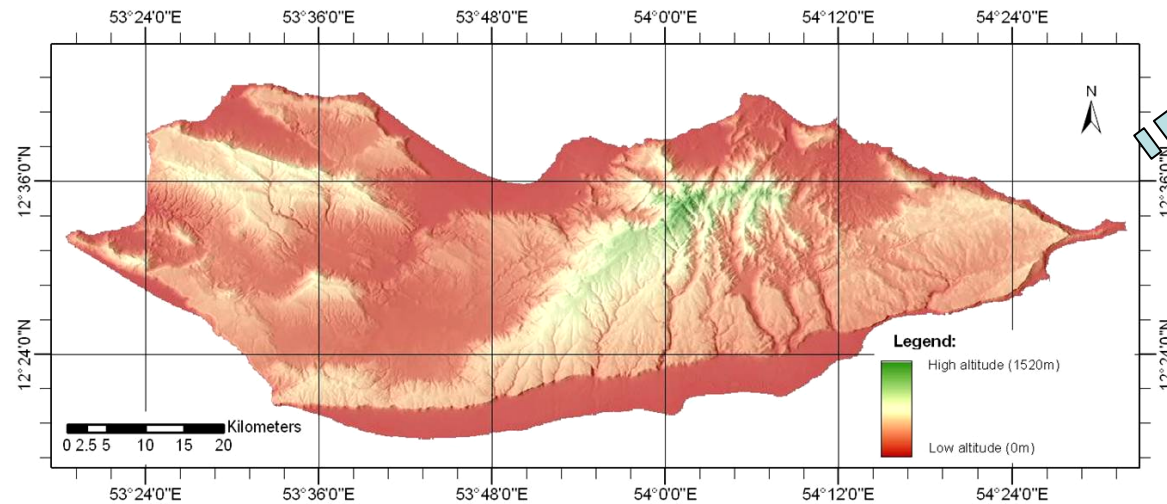


GIS Analyses / Statistics / REGRESS:

PC 1:



DEM – Altitude:

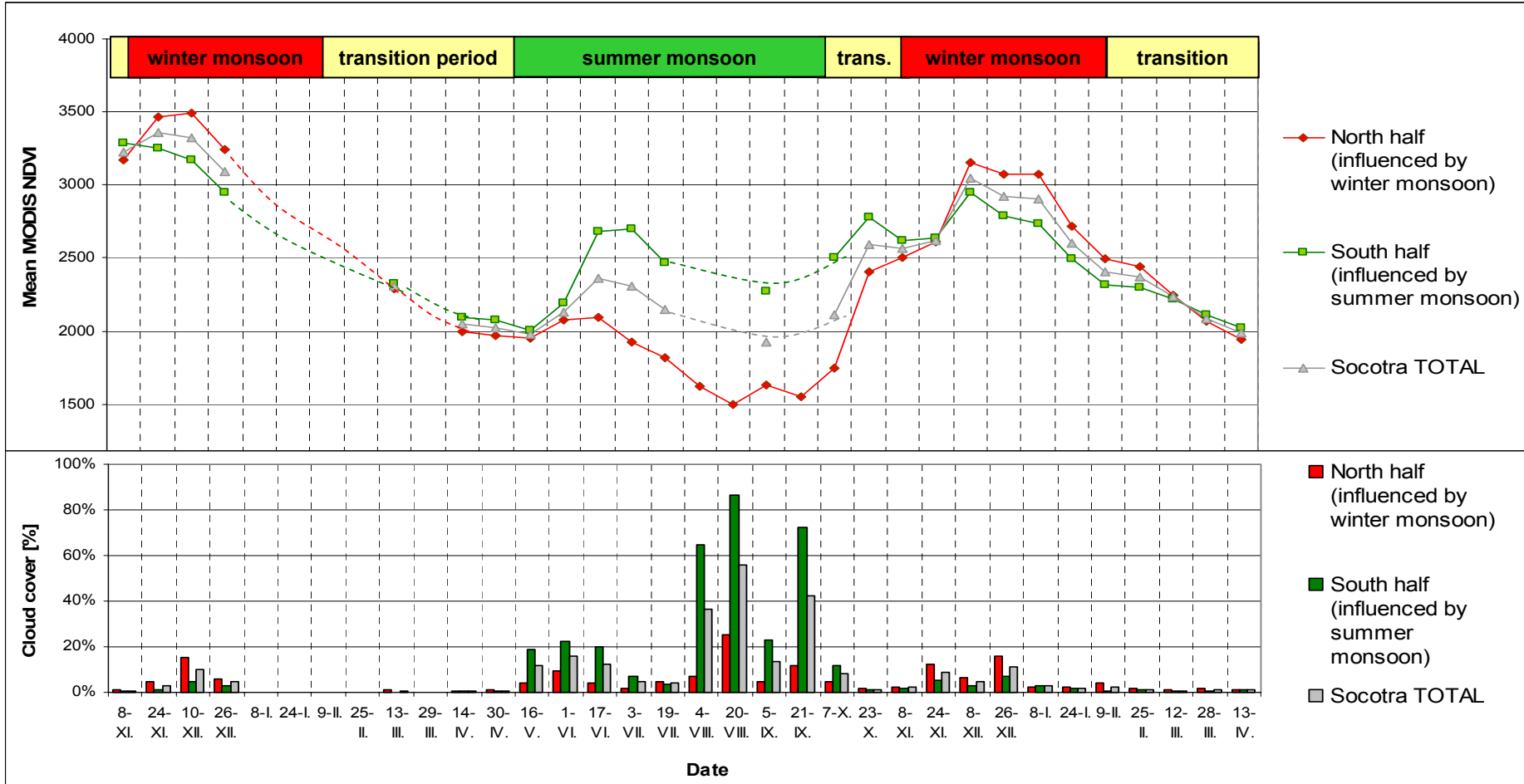


Regression Parameters:

X axis:	dem_250m00
Y axis:	tsa-cmpl_00
Coeff. of Det.	= 81.62 %
Std. Dev. of X	= 221.235753
Std. Dev. of Y	= 197.975101
S.E. of Estimate	= 84.885328
Std. Error of Beta	= 0.000973
t Stat for r or Beta	= 830.835350
t Stat for Beta <> 1	= -196.879227
Sample Size (n)	= 155491
Apparent df	= 155489

GIS Analyses / Time series / PROFILE:

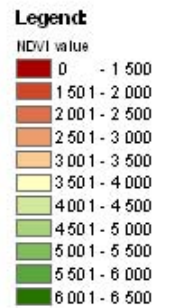
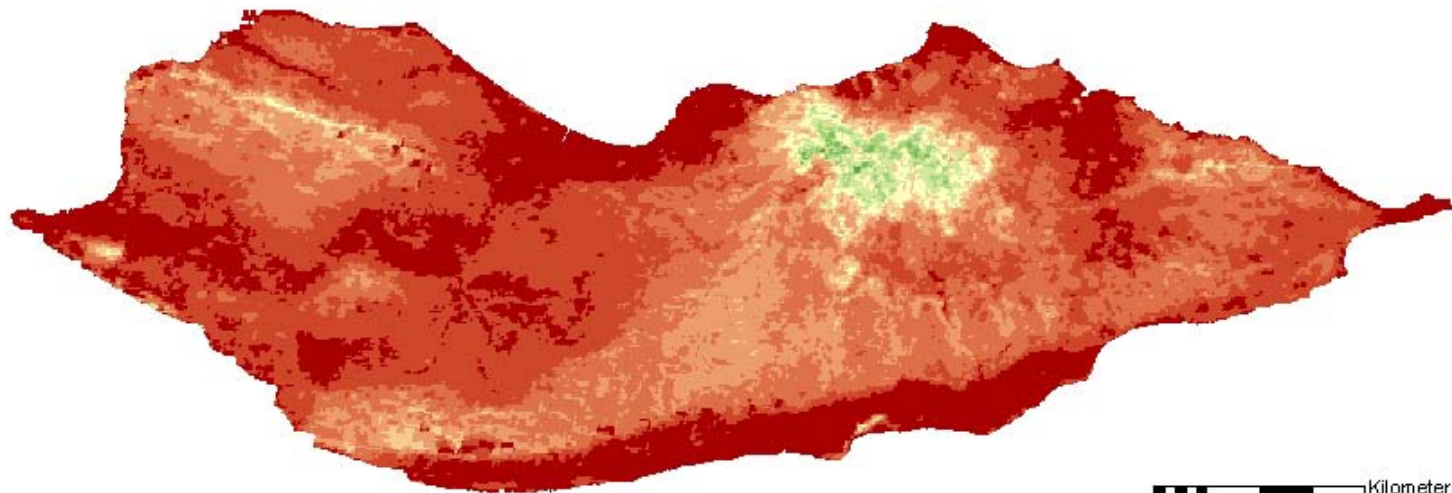
Profile over time:





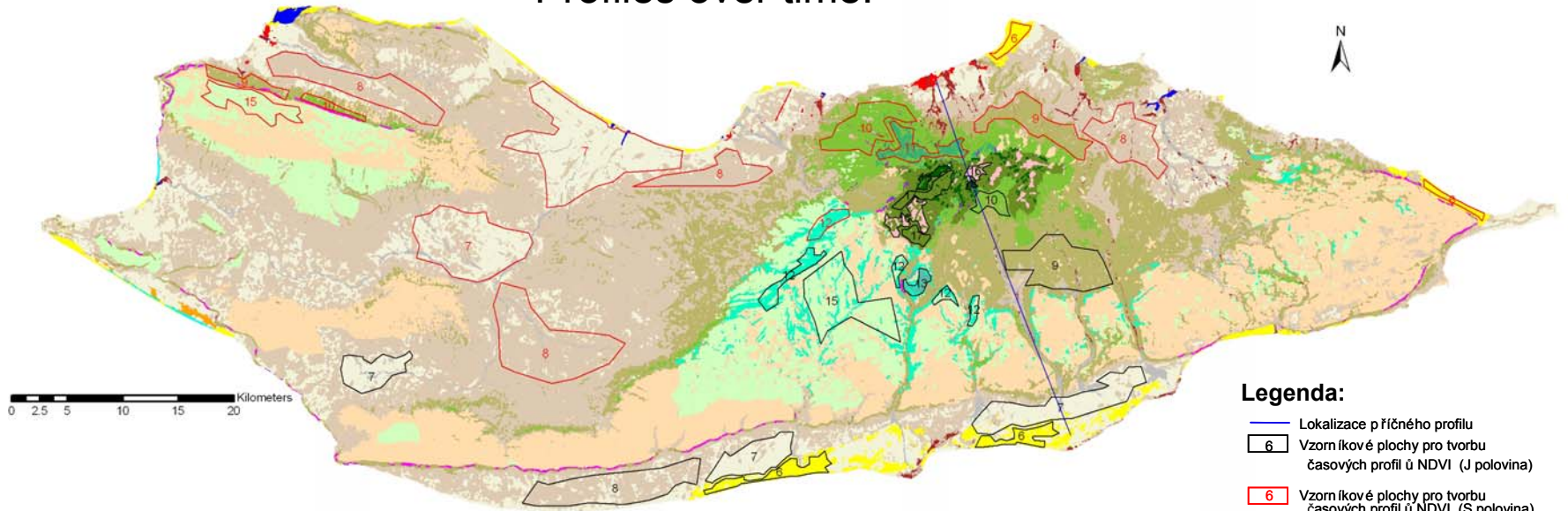
04_097: 13.4.2004

MODIS - NDVI 16 days composite from 6.4.2004 to 21.4.2004



0 2.5 5 10 15 20 Kilometers

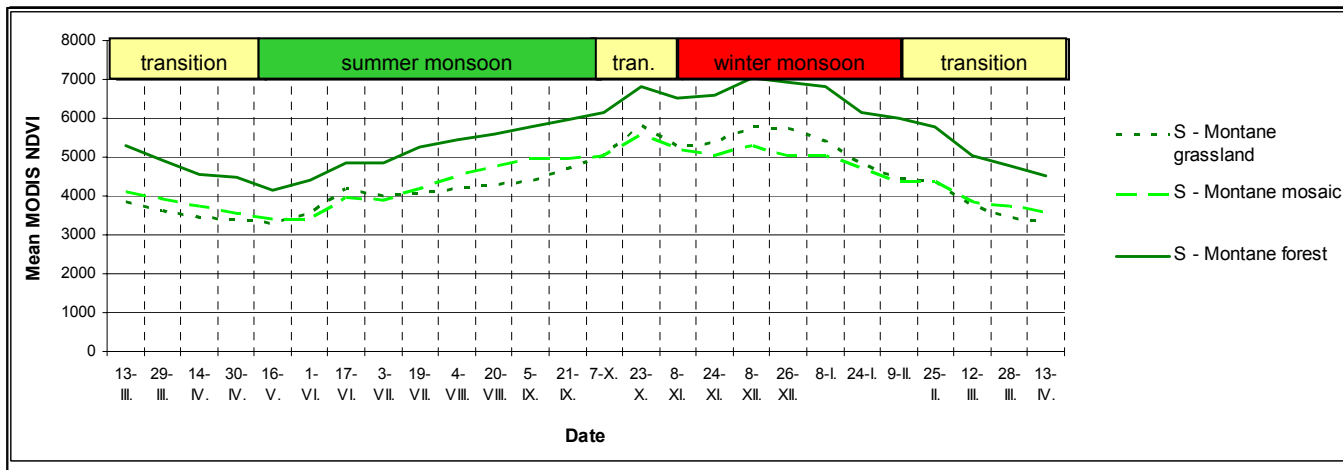
Profiles over time:



Legenda:

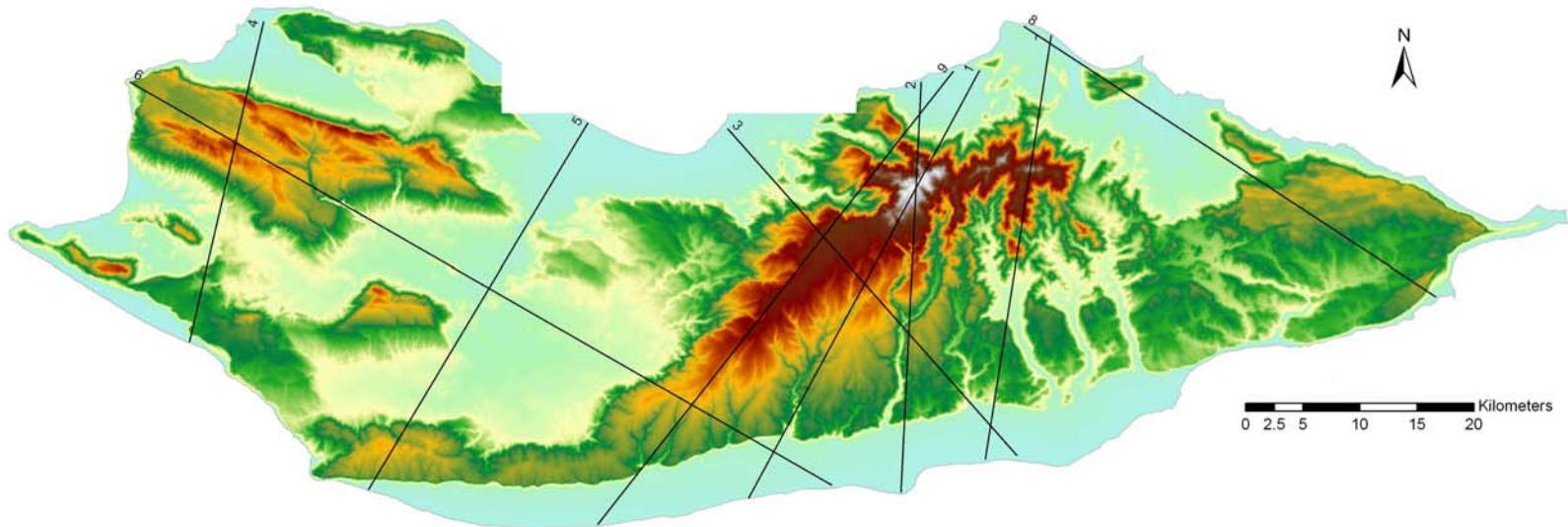
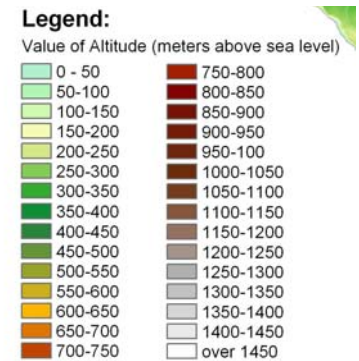
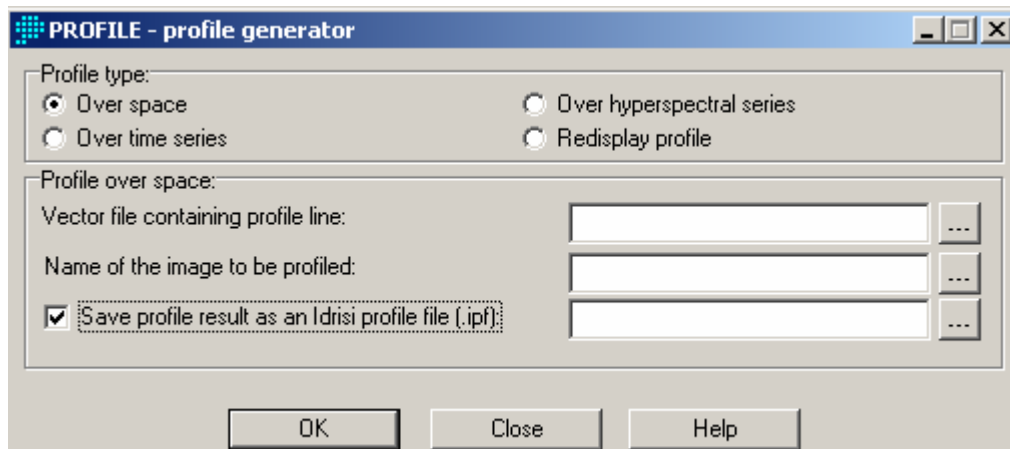
- Lokalizace p říčního profilu
- 6 Vzorlkové plochy pro tvorbu časových profilů NDVI (J polovina)
- 6 Vzorlkové plochy pro tvorbu časových profilů NDVI (S polovina)
- Moře (1)
- Mangrove (2)
- Slanišá poušť (3)
- Laguny (4)
- Vádí (5)
- Písečné duny a n ávěže (6)
- Řídké zakrslé křoviny (7)
- Nízké krotonové a dávívcové křoviny (8)
- Vysoké křoviny se sukulenty (9)
- Kadidlovníkové háje (10)
- Kadidlovníkové lesy (11)
- Dračincové háje (12)
- Dračincový les (13)
- Podhorské pastviny (14)
- Podhorské křoviny (15)
- Horské pastviny (16)
- Horská mozaika (17)
- Horské lesy (18)
- Skály na sedimentech (19)
- Skály na vyvěřelinách (20)
- Datlovníkové plantáže (21)
- Zastavěná půda (22)

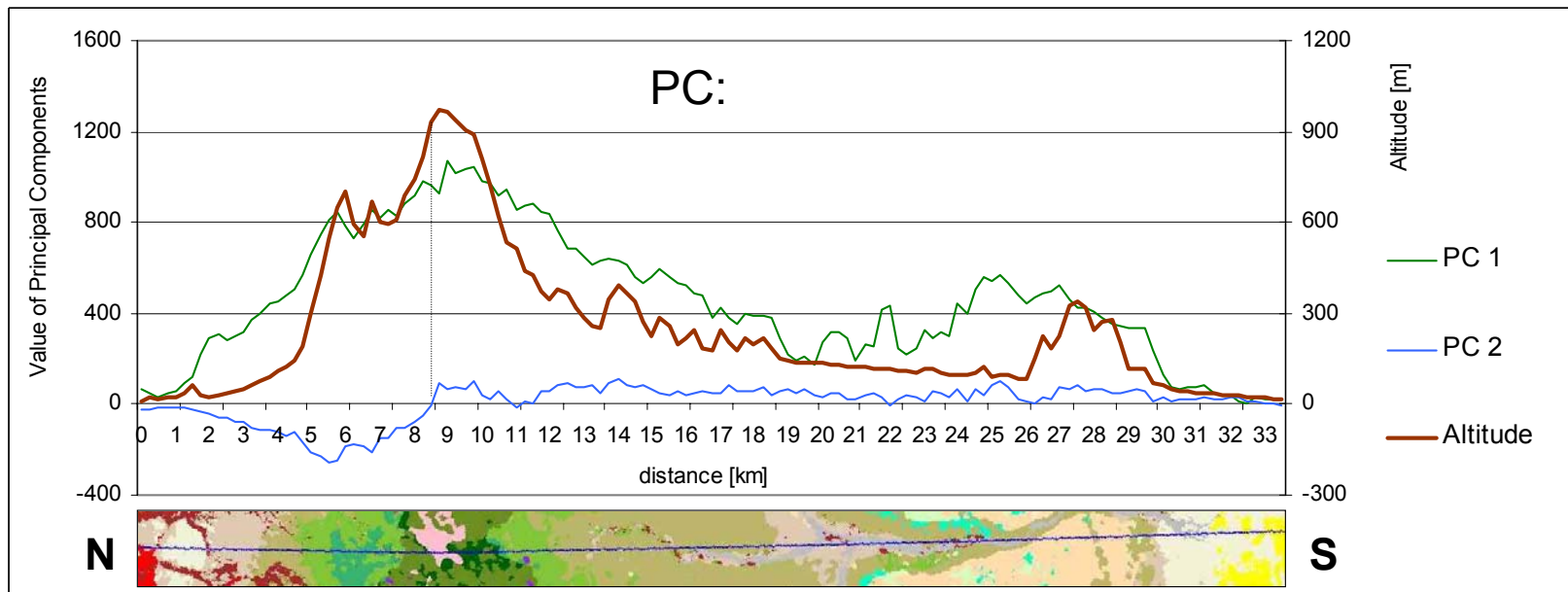
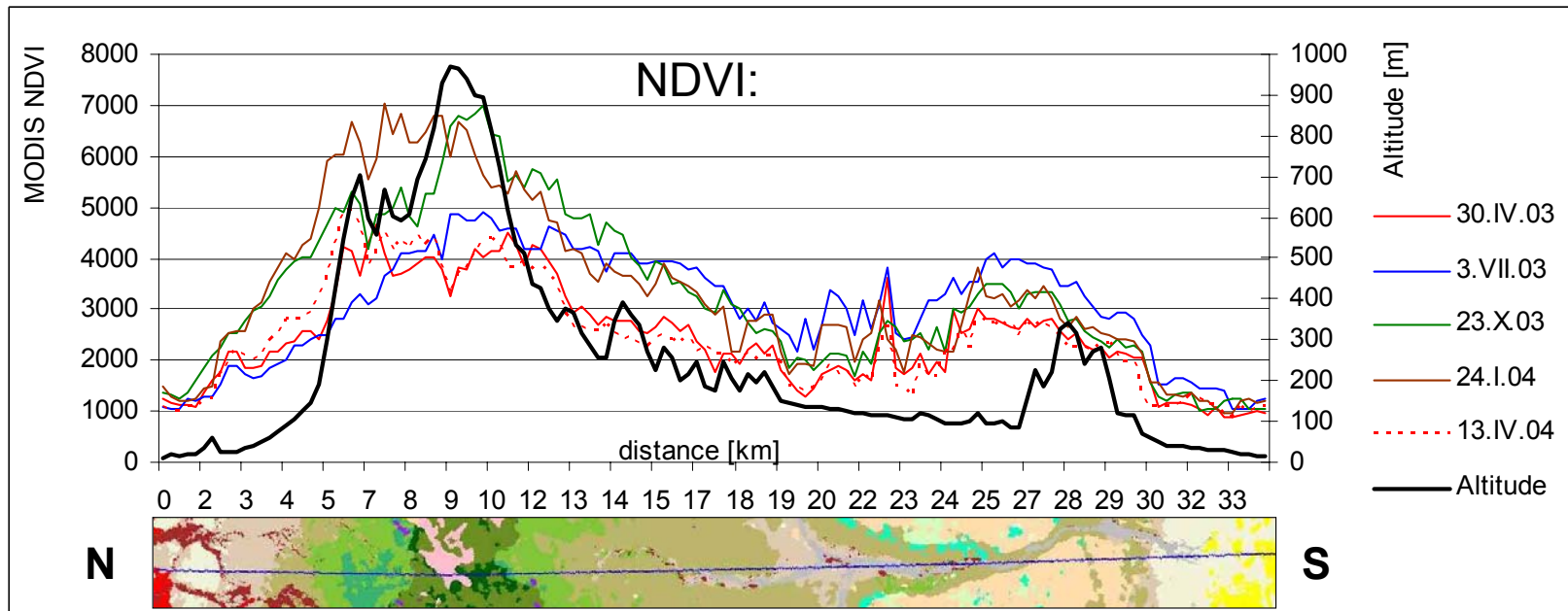
Horské biotopy

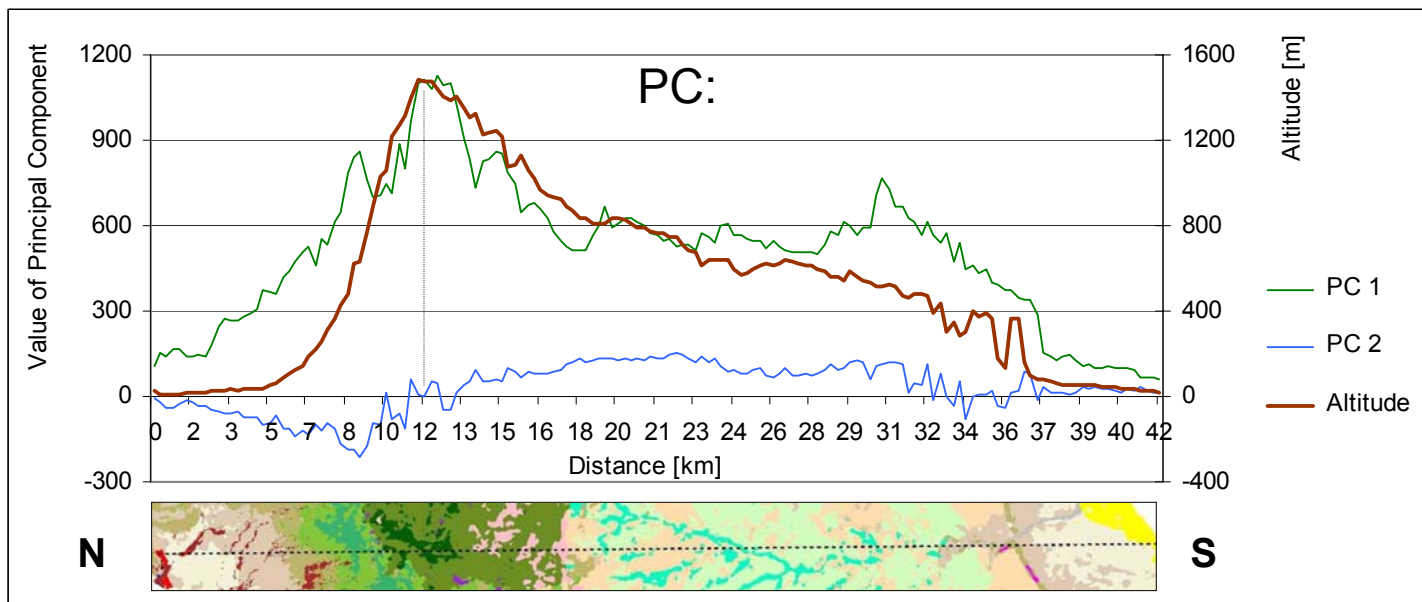
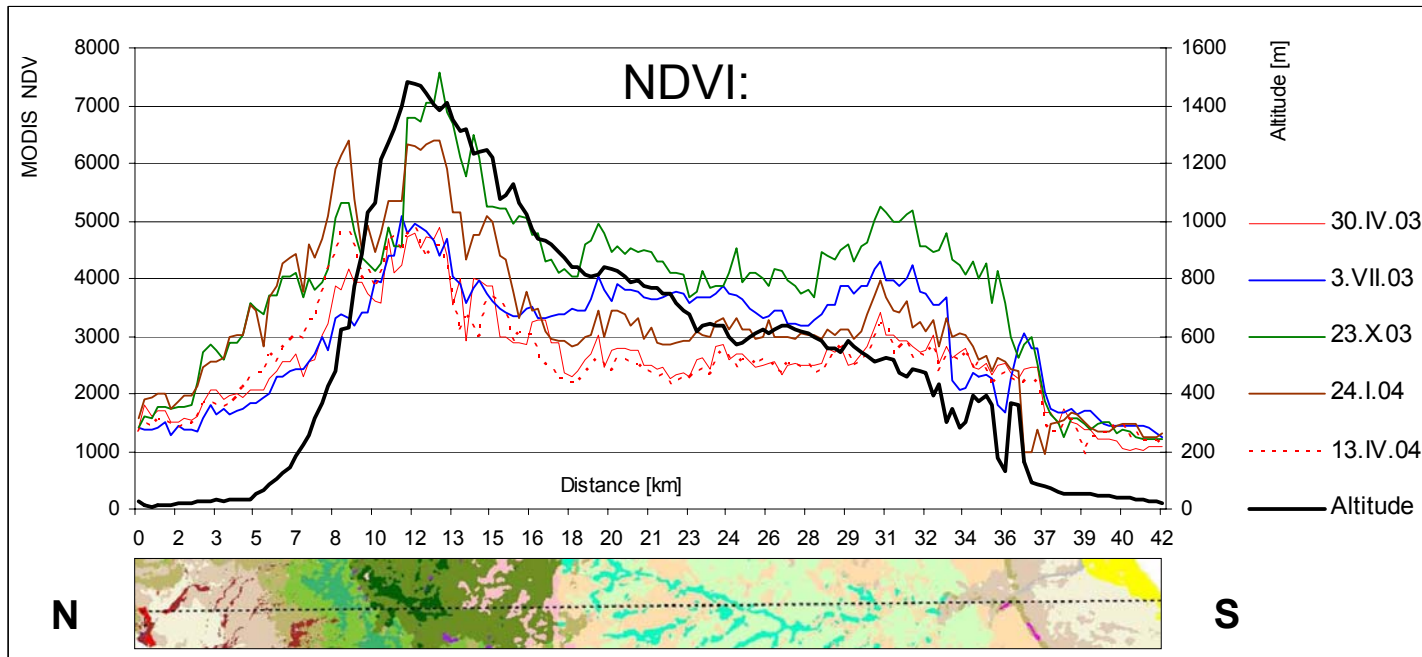


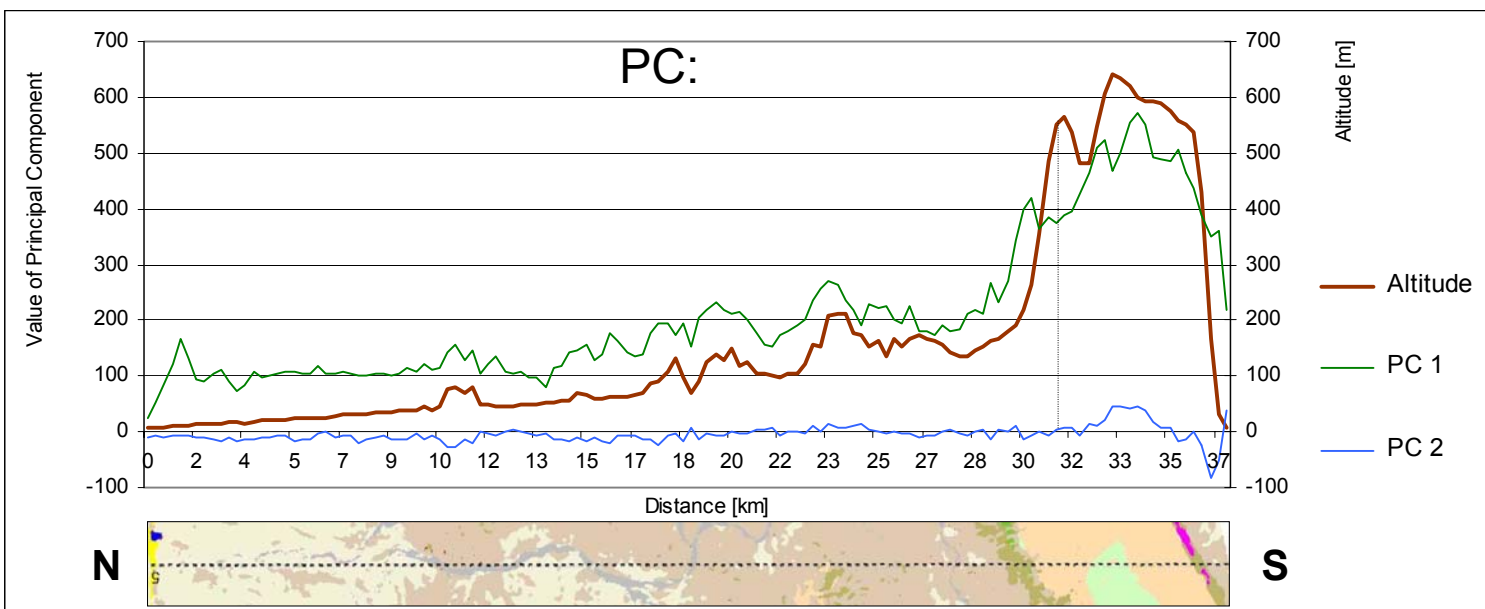
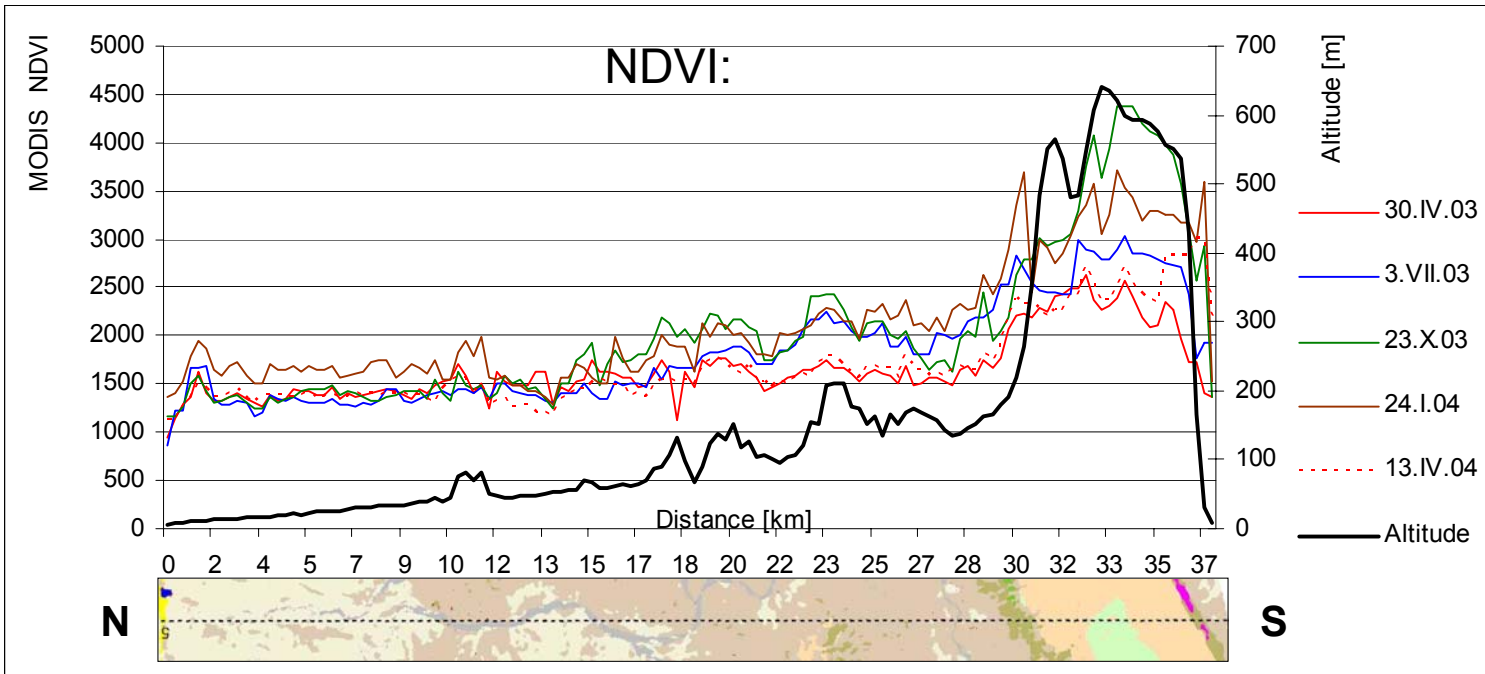
GIS Analyses / Time series / Profile:

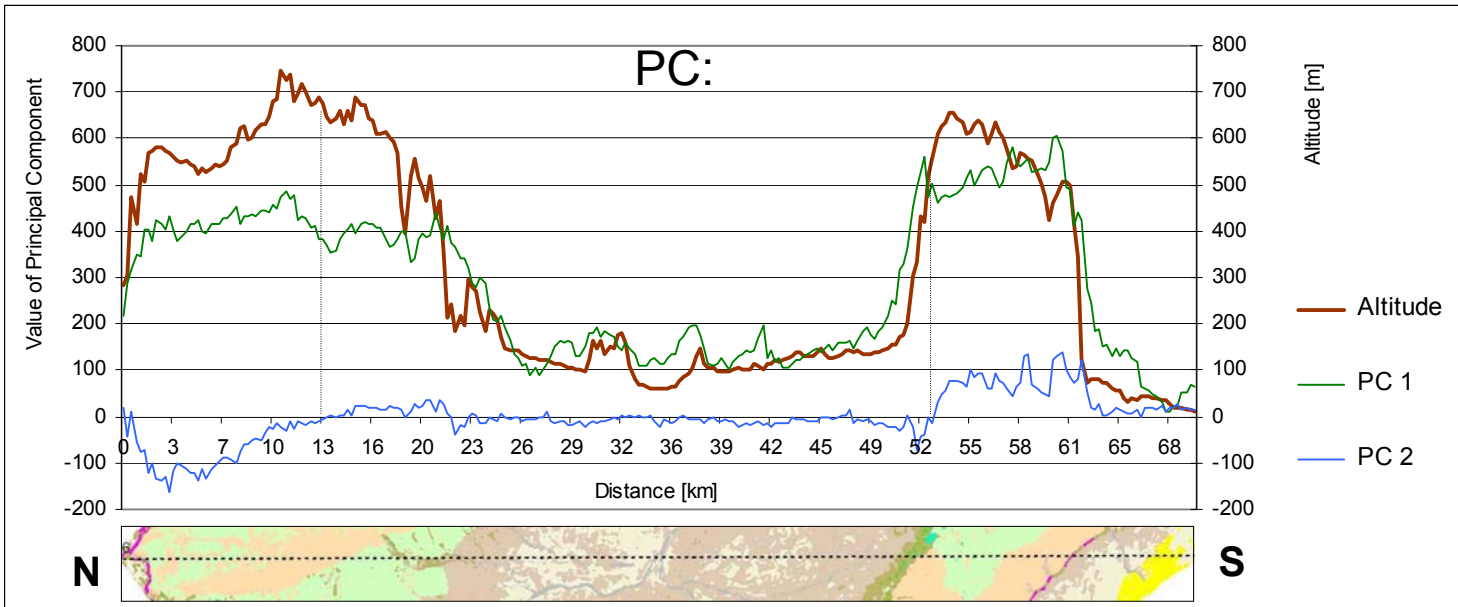
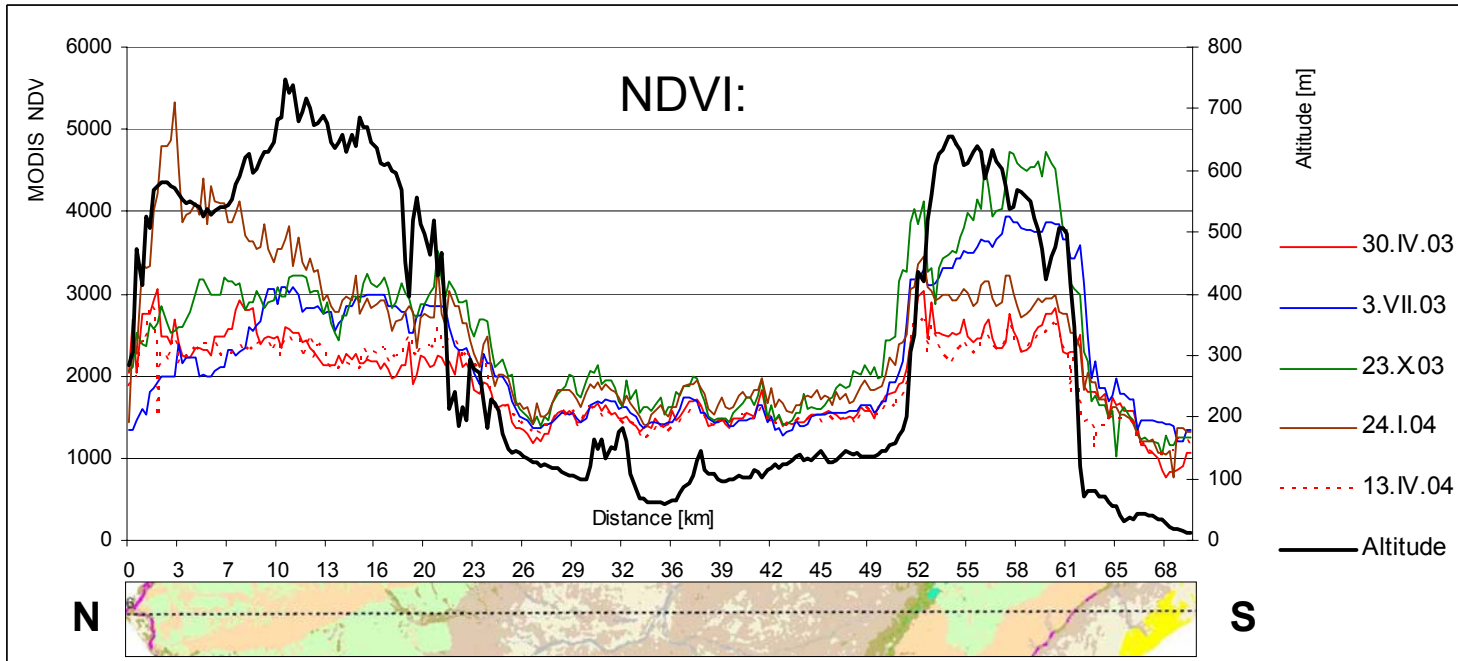
Profile over space:

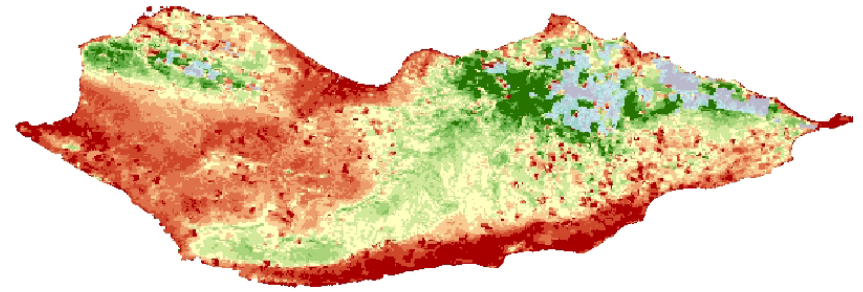
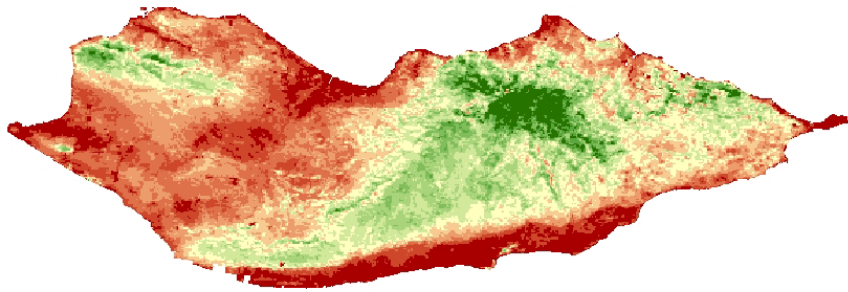












DĚKUJI ZA POZORNOST !

